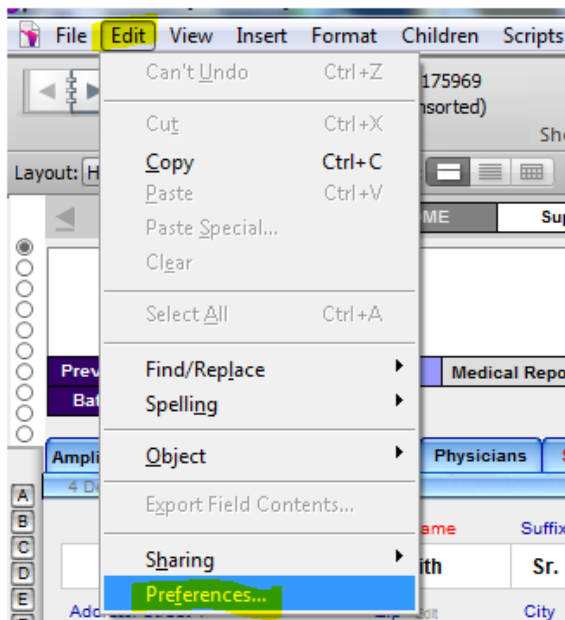
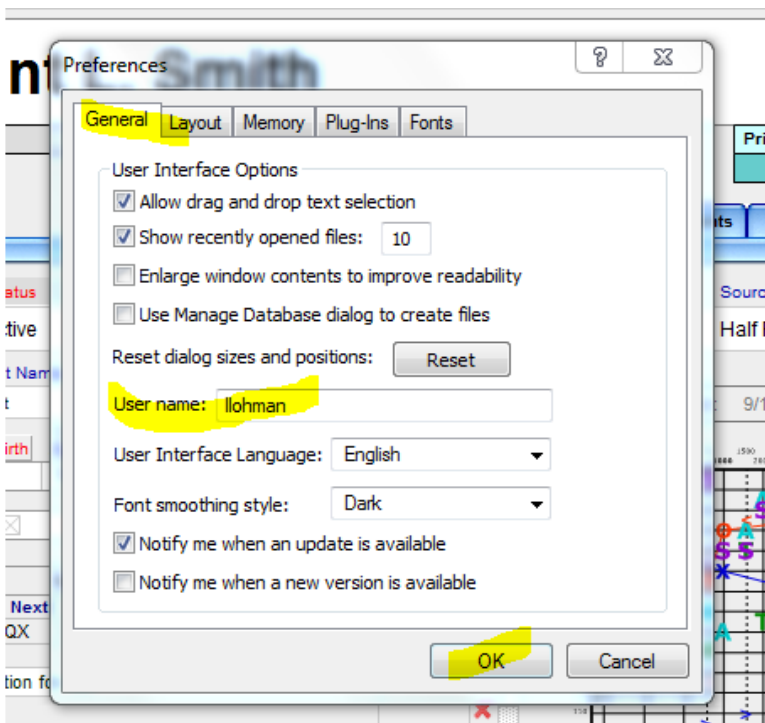


Changing the default Login for FileMaker Pro – WINDOWS



On the FileMaker Pro Menu Bar, go to:
Edit > Preferences

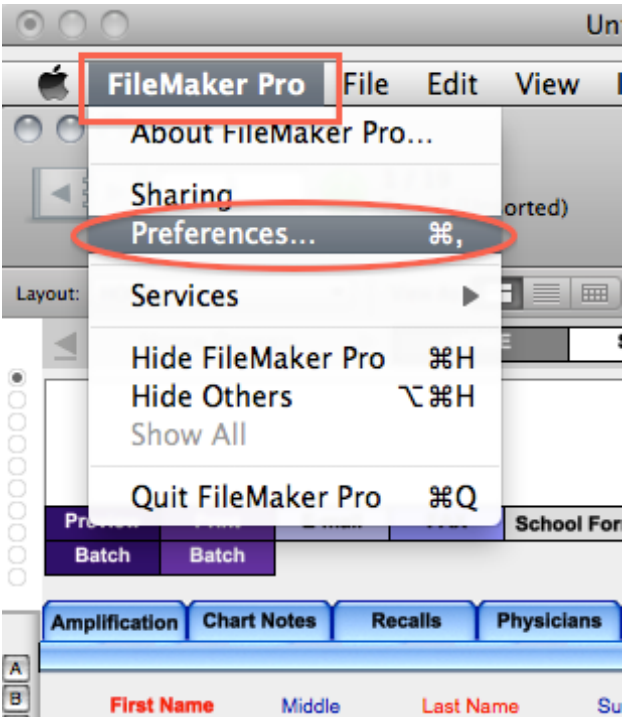


Select the General tab.

Fill in User name with your HearForm user name.

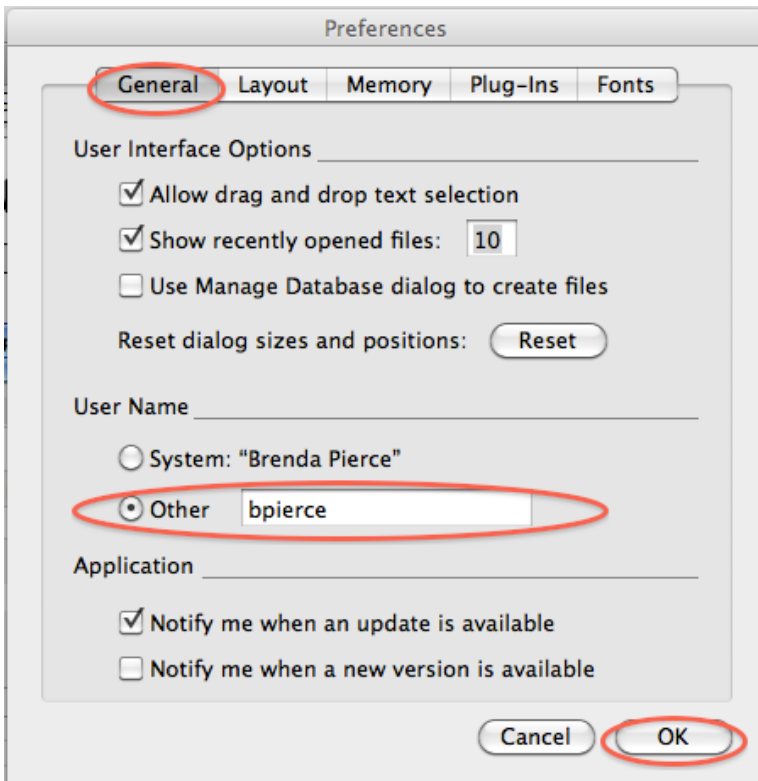
Click OK.

Changing the default Login for FileMaker Pro – MAC



On the Menu bar, click on:

FileMaker Pro > Preferences



Select the General Tab.

Under User Name, select “Other” and type in your HearForm user name.

Click OK.